

SERVOCONTROLS & HYDRAULICS INDIA PVT. LTD.

An ISO -9001-2008 certified company & AS 9100-Rev C company
Website : www.servocontrolsindia.com



Concrete Pumps



Cartridge valves



Dumpers



Car Lift



Wheel Loaders



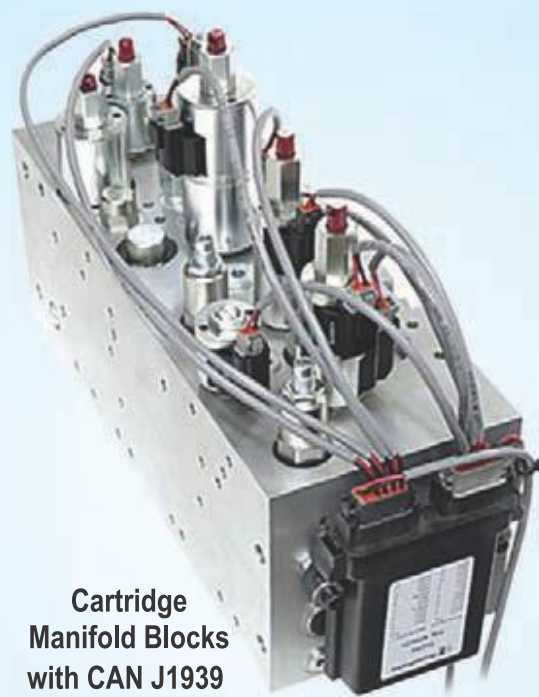
Truck Cranes



Agri Equipment



Graders



Cartridge
Manifold Blocks
with CAN J1939
Electronics & Software



Man Lifts



Boom Pumps



Electronics with Wire Harness & Joysticks



Tandem Rollers



Fork Lifts



Access Platform



Tippers



Excavators



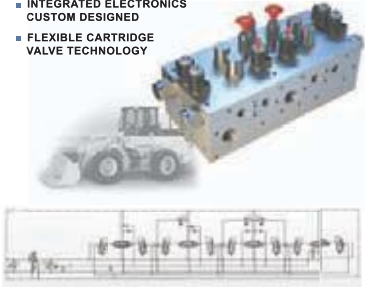
Rock Breakers

Complete Cartridge Manifold Blocks, Closed Loop Electrohydraulics
& Electromechanical Servo Solutions for Material Handling & Construction Equipment.

We Provide Application Solutions for

Electro-Hydraulic Directional Control Systems

- ELECTRO-HYDRAULIC CONTROL SYSTEMS FOR FLOWS FROM 5LPM TO 250LPM, AND PRESSURES TO 350 BAR
- LOAD SENSING
- PRESSURE COMPENSATED
- INTEGRATED ELECTRONICS CUSTOM DESIGNED
- FLEXIBLE CARTRIDGE VALVE TECHNOLOGY



Electro-Hydraulic Suspension System

- INCREASED OPERATOR COMFORT
- PROPORTIONAL POPPET VALVE TECHNOLOGY

APPLICATION:
AXLE BOOM CABIN



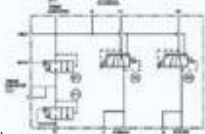
Complete Range of Product for Pilot Systems

- ELECTRO HYDRAULIC SELECTION OF PILOT PRESSURE
- ON-OFF OR PROPORTIONAL PILOT CONTROL
- WATERPROOF TO IP69



Electro-Hydraulic Control Systems for Hydraulic Transmissions

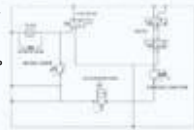
- FULL FLOW TECHNOLOGY
- APPLICATION PROVEN
- FULL ELECTRO-HYDRAULIC CONTROL SYSTEM
- PRECISE CLUTCH ENGAGEMENT
- PROGRAMMABLE PRESSURE CONTROL
- SMOOTH TRANSITION
- CUSTOMISED FILL AND RAMPING RATES
- EFFICIENT AND ECONOMICAL
- IP69K ENVIRONMENTAL PROTECTION



Hydrostatic Transmission Control

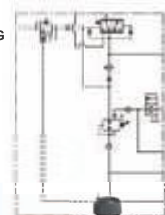
- Multi Function Assembly

- PROPORTIONAL COOLER BY-PASS TO OPTIMISE SYSTEM TEMPERATURE
- EMERGENCY HAND PUMP AND CAB TILT
- NEUTRAL CHARGE RELIEF CONTROL
- ELECTRIC PARK BRAKE CONTROL
- INTEGRATED FILTER HEAD IN MANIFOLD WITH BY-PASS
- SENSORS, FILTER AND FITTINGS ASSEMBLED AND TESTED.

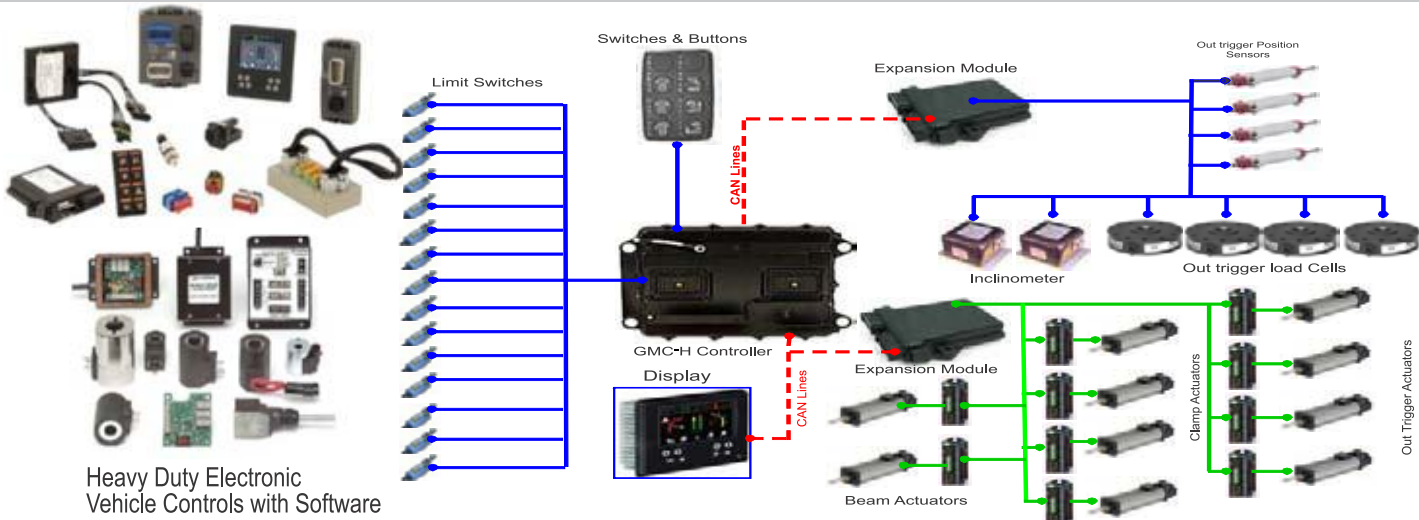


Steering & Pilot Control System

- PRIORITY STEERING
- ACCUMULATOR CHARGING
- PILOT SELECTION



In house facility for Design, Manufacturing & Assembly of custom built Electronic Control unit Packages with Software.



We Provide Application Solutions for

ELECTRO-HYDRAULIC SOLUTIONS FOR EXCAVATORS

- MAIN DIRECTIONAL CONTROL SOLUTIONS OPTIMIZED FOR EXCAVATORS
- FIXED OR ADAPTABLE ARM AND BOOM SUSPENSION SOLUTIONS IMPROVE EFFICIENCY
- CUSTOMISABLE ATTACHMENT OPTIONS: GRAPPLE HAMMER QUICK COUPLER AUGER BREAKER BLADE
- BOOM, SCKET, SWING AND SLEW CONTROLS
- METER-IN/ METER-OUT, LOAD HOLDING, LOW LEAKAGE, AND EFFICIENT DIRECTIONAL CONTROL



ELECTRO-HYDRAULIC SOLUTIONS FOR TELEHANDLER

- BRIDGE CIRCUIT TECHNOLOGY FOR EFFICIENT METER-IN METER-OUT, FLOAT AND MOTOR FUNCTIONS
- ON-OFF OR PROPORTIONAL PILOT CONTROL
- E-COILS ARE WATERPROOF TO IP69K STANDARDS AND OPTIMIZED FOR LOW VOLTAGE CONSIDERATIONS
- INTEGRAL POSITION SENSING OPTIONS SATISFY EN15000 REQUIREMENTS



ELECTRO-HYDRAULIC SOLUTIONS FOR WHEEL LOADERS

- CUSTOM RIDE CONTROL SOLUTIONS
- FAN DRIVES CONTROLLED BY HYDRAULIC CARTRIDGE VALVES ARE QUIETER AND RUN ON LESS HORSEPOWER
- POWERTRAIN SOLUTIONS ARE SYNCHRONIZED WITH CORETEK™ CONTROLLERS AND COST-EFFECTIVE DROP-IN PROPORTIONAL VALVES
- DYNAMIC STEERING AND CONTROL BRAKING CONTROLS WITH OR WITHOUT PRIORITY BYPASS



ELECTRO-HYDRAULIC MACHINE CONTROL SOLUTIONS

- FULL LINE OF PROGRAMMABLE ELECTRONIC VEHICLE CONTROL
- CAN OPEN AND J1939 COMPATIBLE
- RUGGED, FIELD-PROVEN COMPONENTS SUITABLE FOR HEAVY-DUTY OPERATING CONDITIONS
- RELIABILITY PROVEN THROUGH EXTENSIVE TESTING
- OPERATING TEMPERATURES FROM -40 TO 110°C
- MOISTURE RESISTANCE TO IP67 SPECIFICATIONS
- CE RATED

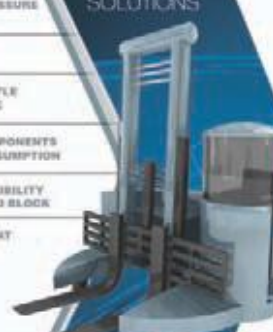


**CUSTOM MANIFOLDS
CARTRIDGE VALVES
ELECTRO HYDRAULIC
MACHINE CONTROLS**



MATERIALS HANDLING SOLUTIONS

- SOFTWARE OPTIMISED PRESSURE COMPENSATION
- STABLE MAST LOWERING
- LOW LEAKAGE, POPPET-STYLE LOWERING CONTROL VALVE
- REDUCE MECHANICAL COMPONENTS AND BATTERY POWER CONSUMPTION
- INCREASE MOUNTING FLEXIBILITY WITH A SMALLER MANIFOLD BLOCK
- GREATER LOAD STABILITY AT LOWERING-START



MAIN CONTROL FOR AERIAL LIFTS

- EASY LOCK-OUT DRIVE FUNCTION ENABLES SAFE LIFTING AND LOWERING OPERATION
- STABLE BOOM LOWERING SOLUTIONS WITH LOW LEAKAGE
- CUSTOMISABLE MANUAL EMERGENCY BRAKE FUNCTION
- FULL FLOW FORWARD AND REVERSE DRIVE FUNCTIONS WITH SOFT STOP AND REGENERATIVE FLOW OPTIONS
- WATER-PROOF, IP69-RATED CORROSION RESISTANT VALVES AND COILS



POWERTRAIN CONTROL

- RESPONSIVE CONTROLS MINIMIZE LEAKAGE AND REDUCE FUEL COSTS
- CONTAMINATION AND CORROSION-RESISTANT WITH IP69K RATING
- MULTI-SPEED OR HYDROSTATIC
- HIGHLY CUSTOMIZABLE, COST EFFECTIVE AND COMPACT CONTROL SOLUTIONS

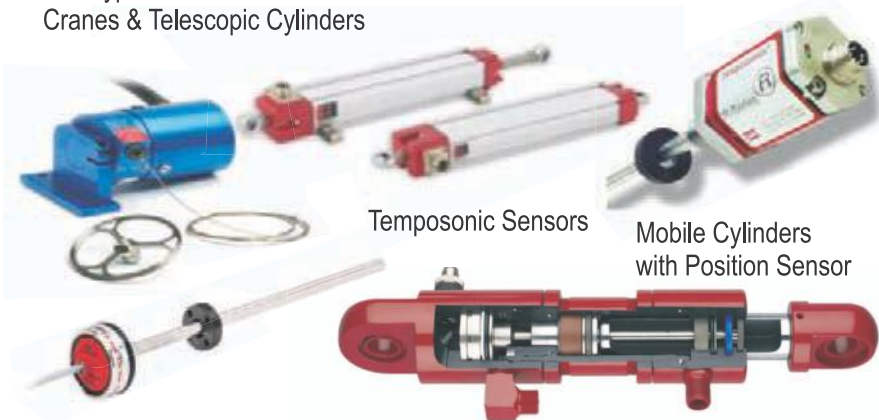



Wire Harnessing

Hydraulic Cylinders with Position Sensors

Joysticks & Electronic Controllers

Coil Type Position Sensors for Cranes & Telescopic Cylinders



Temposonic Sensors

Mobile Cylinders with Position Sensor



**SERVOCONTROLS 100% EOU Unit in 12 acres of land,
Opp. Quest SEZ, Hattargi, Belgaum, Karnataka.**



**SERVOCONTROLS Existing facility
Industrial Estate, Udyambag, Belgaum**

**We are your best
Indian Solution Provider**



Servocontrols Indian Partner for
Global Solutions with Hydraforce



Kaigarika Ratna Prashasti
(Industrial Jewel Award May-2011)



Servocontrols
State bank of India's Esteemed Customer

Address for Correspondence:
SERVOCONTROLS & Hydraulics (I) Pvt. Ltd.
(An ISO 9001-2008 Certified Company) &
AS 9100 Rev C Certified Company
Survey No. 683, Industrial Estate, Udyambag,
Belgaum 590008, Karnataka, INDIA.
Tel: 91-831-2407501/2/3, 2481734, 4201132
Fax: 91-831-2484496
E-Mail: sales@servocontrolsindia.com
Website: www.servocontrolsindia.com



The Servocons

Contact Persons:

Mr. Deepak V. Dhadoti
Mobile: +919448395734
Email: deepak@servocontrolsindia.com

Mr. Dinesh V. Dhadoti
Mobile: +919845109022
Email: dinesh@servocontrolsindia.com

Mr. Nitin Urankar
Mobile : +919448395731
Email : hydraulics@servocontrolsindia.com

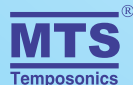


Various Technology Excellence Awards

TECHNICAL ALLIANCE PARTNERS



Solenoid Valves Electro-Proportional Valves Directional Valves Pressure Control Valves Flow Control Valves Cartridge Manifold blocks



Cat. Part No. : SC 10501113