

POSITION CONTROL

VELOCITY CONTROL

PRESSURE CONTROL

FORCE CONTROL

ULTIMATE MOTION CONTROL

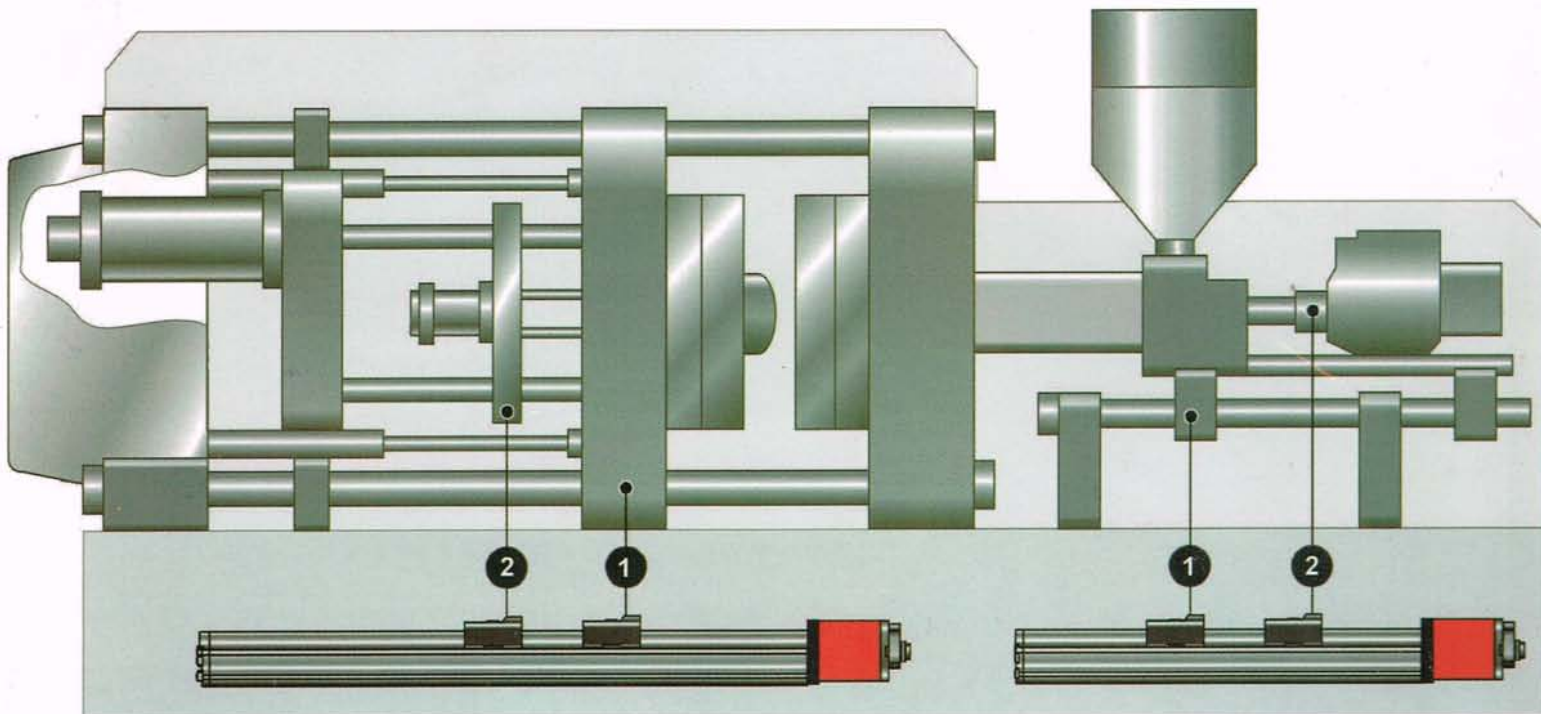
POSITION CONTROL

VELOCITY CONTROL

PRESSURE CONTROL

FORCE CONTROL

ULTIMATE MOTION CONTROL



Your Best Partner

**SERVOCONTROLS
& Hydraulics (I) Pvt. Ltd.**

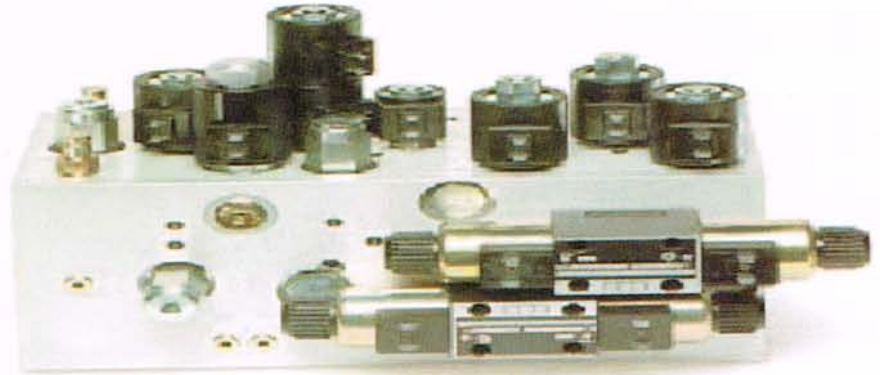
www.servocontrolsindia.com

Survey No 683, Industrial Estate,
Udyambagh, Belgaum – 590008
Karnataka India
Phone : 91-831-2407501/2/3/2481734/5201132
Fax : 91-831-2484496
E-mail: plastics@servocontrolsindia.com
Website : www.servocontrolsindia.com

Cartridge type Proportional valves and manifold blocks for Injection/Blow molding machines

SERVOCONTROLS - HYDRA FORCE

We offers one of the most Comprehensive lines of high Quality Electro-proportional pressure, flow and directional valve. We are designing High performance valves to meet virtually any need encountered in Plastic processing Machines for flow rates ranging from 1 to 450 lpm and pressure adjustment range from 2 to 350 Bar, single and bi-directional control valves. Hydra force also offers electronic controls for Valves with PWM technology. We offer custom integrated manifolds with highest quality in the World. Manifold surfaces are fly cut to assure square ness And exact sizing where precise location is required. We offer aluminum, M. S, Casting manifolds to suit the needs of designers engaged in plastic processing Machine designing.





SERVOCONTROLS - SENSTRONICS PRESSURE SENSORS

FULLY CONDITIONED PRESSURE TRANSDUCERS

Pressure transducers used in Plastic processing machines for pressure control are built on **Thin Film Technology**. The Senstronics thin film technology and its manufacturing process have no equals, a just reward for six years dedication and the search for uncompromised perfection, manufacturing process called TCAS which simply means "Thermal Compensation At Source". TCAS working together with the Senstronics element technology called Thermotec™ ensures that sensing elements leave the Fab for final assembly, manufactured to a staggering thermal accuracy of less than 0.005% / degree C.

ORDERING CODE:

	SCP	400	1	2	4	5		
Pressure Transducer								
Pressure range in Bar							Electrification Connection	
7							DIN 43650 (IP65)(GDS)	1
10							Bayonet DIN 72585 (IP69)	3
16							AMP (Superseal) (IP67)	4
20							M12 Flying Leads (IP67)	5
35							Automotive connectors	6
70							consult	
100							Output Voltages	
250							0.5-4.5 V Ratiometric	1
400							0 - 5 Volts	3
700							0 - 10 Volts	4
1000							4 - 20 mAmp	5
1600							2 mVN typical for unconditioned output	6
2000							Input Voltages	
2200							5 Volts regulated	1
Pressure Connection							12-35 Volts	2
G 1/4"	1						10 Volts is the Max Rec In	3
1/4" NPTF	2						For Unconditioned sensors	
1/8" NPTF	3							
M 12X 1.5	4							
with spigot								
7/16" UNF	5							
1/4" BSP	6							





EP / EP2 Low Cost Temposonic Magnetostrictive (Contact less) Technology at the price Of Potentiometer

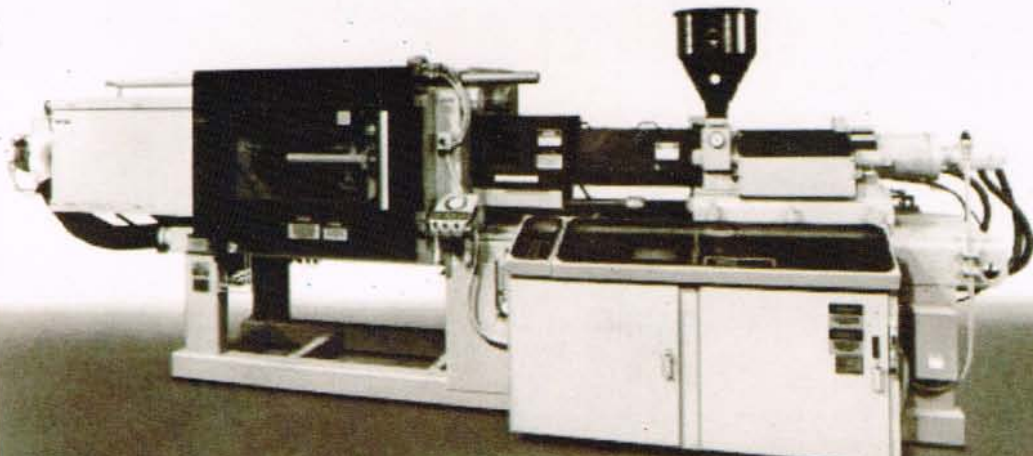
Our sensing technology is routinely used on 3 axes of plastic injection molding machines: injector control, ejector control, and mold closure. Superior ruggedness and reliability, as well as a host of other applicable performance features, makes MTS Temposonics linear-position sensors the smart choice for this application.

BENEFITS:

- Superior response and accuracy result in higher machine performance, part quality and reduced cycle time.
- Temposonics sensors offer rugged, reliable construction resulting in longer operating life when compared to potentiometers.
- Linear-position sensor design actually reduces setup time when compared to mechanical limit switch setup.
- High shock and vibration tolerance and superior EMI and noise immunity ensure trouble free operation.

ORDERING CODE:

		EP	X	XXXX M	XXX	1	XX
Sensor Model							
EP	Profile Housing						
Style							
S	Magnet Slider, Joint at top						
V	Magnet Slider, Joint at front						
M	U - Magnet OD33						
L	Block Magnet L						
Measured Range							
	0050-1500 mm						
	0050-3250 mm						
Connection Type							
D60	6 - Pin male recepticle M16						
Input Voltage							
1	24 Vdc						
Output							
V0	0 - 10 V & 10 - 0 V						
A0	4 - 20 mA						
A1	20 - 4 mA						
R0	Start / Stop						
R3	Start/stop with sensor parameters upload						

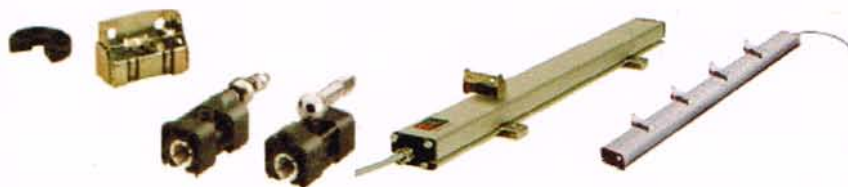


Scope Of Delivery:

- Sensor
- Captive sliding magnet or floating magnet
- 2 mounting clamps up to 1250mm stroke + 1 mounting clamp for 500 mm each

Measuring Range:

- Standard:
- Up to 1500 mm in 50 mm steps
- Up to 3250 mm in 250 mm steps
- Option: Other lengths upon request



**Ordering Code:
Position Sensor Temposonics EP2**

EP2 – XXXXM – A
 Measuring range: 0100/0200/0300/0400/0500/0600/0700
 0800/0900/1000/1100/1200/1300/1400/1500
 Analog Output : 0 – 10 V
 Cable outlet : 5m

Existing Customer Reference List

for Servo controls & MTS:

a) India; ASB Nissei, L&T Demag b) World Wide :

Billion SA	France	Injection Molding Machinery
Ferromatik Milacron Gmb	Germany	Injection Molding Machinery
Netstal Deutschland Gmb	Germany	Injection Molding Machinery
Demag Ergotech GmbH	Germany	Injection Molding Machinery
Windsor Kunststoff	Germany	Injection Molding Machinery
Negri Bossi Spa.	Italy	Injection Molding Machinery
Italtech Spa.	Italy	Injection Molding Machinery
Nissei Plastic	Japan	Injection Molding Machinery
JSW	Japan	Injection Molding Machinery
Toyo Metal	Japan	Injection Molding Machinery
Uniloy Milacron Germany	Germany	Blow molding Machinery
Sipa Spa	Italy	Blow molding Machinery
Magic MP Spa.	Italy	Blow molding Machinery
Uniloy Milacron S.r.L.	Italy	Blow molding Machinery
ASB	Japan	Blow molding Machinery
Gruppo C.B.M. Srl.	Italy	Thermoforming Machines
Kuhne GmbH	Germany	Extrusion Lines for Blow Film
Costr. Mecc. Luigi Band	Italy	Extrusion Lines for Blow Film

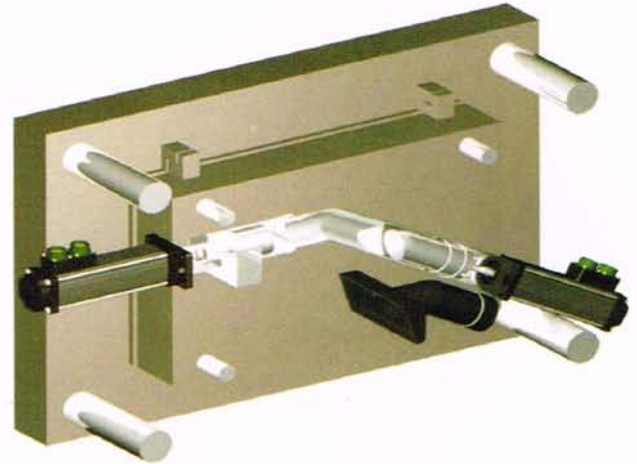
We repair/service MTS Temposonic Sensors.



Servocontrols - Exlar Servo Flexibility all Electric Core Pullers

Electric core pull cylinders:

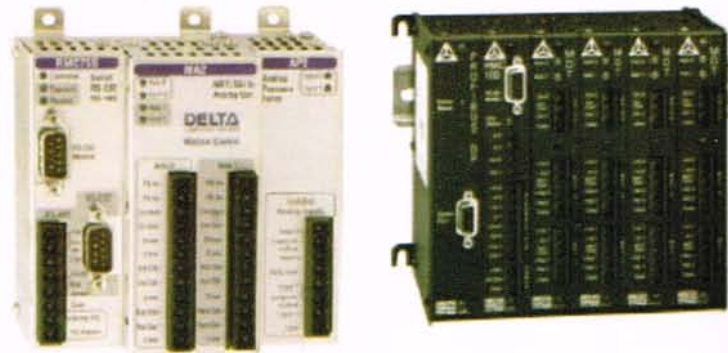
The hot topic with injection molders is all-electric core pullers. It's an easy retrofit, just replace your hydraulic cylinder with an Servocontrols - Exlar electric actuator! The flexibility of the servo system allows the use of the existing hydraulic control switches for a near drop-in replacement. Additionally, servo systems eliminate lengthy start-ups and high maintenance, minimize cycle time and improve throughput! Servocontrols - Exlar offers several families of all electric, servolinear actuators designed to fit and mount in the same space as hydraulic cylinders. The combination of speed and force will meet or exceed your performance expectations. Servocontrols - Exlar actuators are also perfectly suited for applications such as toggle actuators, assist cylinders, blow pin cylinders, clamp and locking cylinders etc.



Electric core pull cylinders:

Servocontrols - Delta Computer Systems

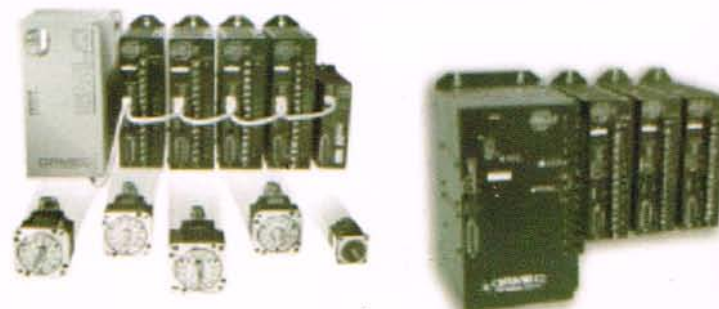
Delta Computer systems offer Motion Controls for servo -hydraulic and Servo motor applications featuring fieldbus applications, Ethernet, Profibus -DP etc.. Control motion and transfer real time SPC Motion data over a distributed fieldbus or use a few pushbuttons in a stand alone application. Years of Experience in servo hydraulic and motion control. PID with extend and retract feed forward s for both velocity And acceleration Synchronizing, gearing, Super imposed moves trapezoidal, S-Curves and spline profiling Profiles changeable on the fly teach modes



RMC Controllers

Servocontrols - Ormec Drives

Servo Wire SM drives are designed to offer high performance motion control using all-digital servo drives connected via an open standard FireWire network. These drives designed on DSP technology to produce fast updates and high performance. The high bandwidth control loops in the drives along with high resolution motor feedback combine for quick and accurate torque, velocity and position control, velocity and torque loops are all closed in the SM drives.



Parison Programming For Blow Moulding Machine using Electromechanical / Electrohydraulic Technology

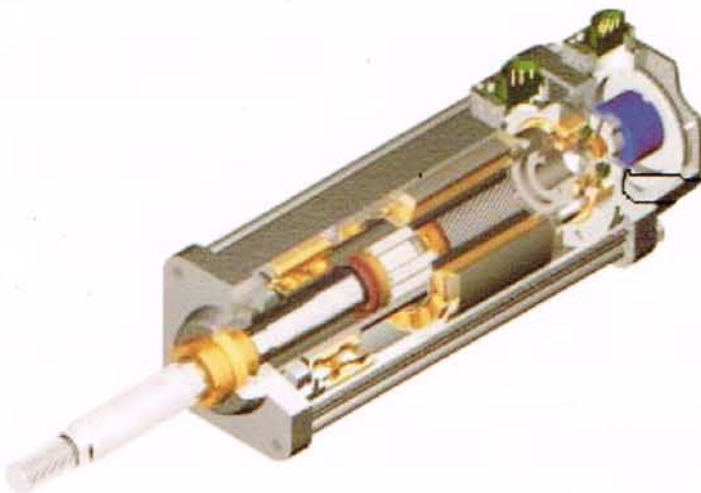
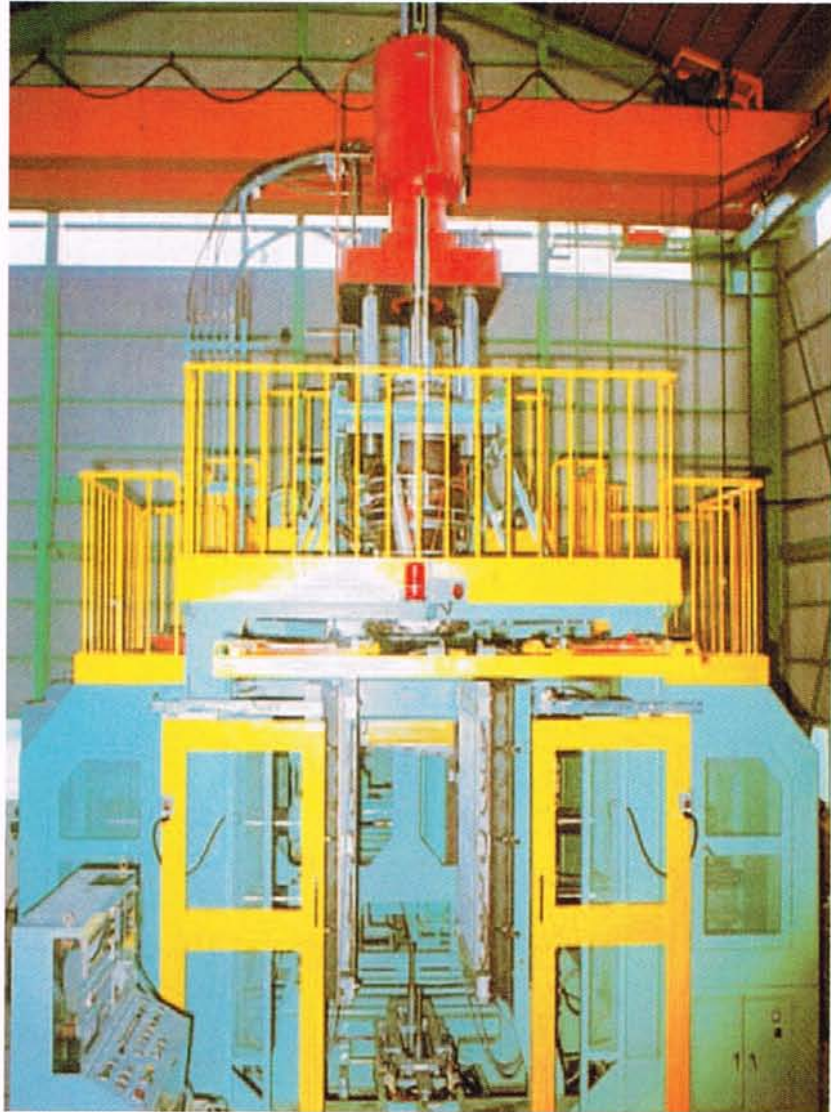
The Blow Moulding process is used to turn plastic stock into finished products the process involves many steps.

- ◆ Pressurizing molten plastic to form a tubular parison
- ◆ Enclosing the semi-molten parison in a mould.
- ◆ Inflating the parison with air, causing it to assume the shape of the mould.
- ◆ Cooling and ejecting the blow moulded part.

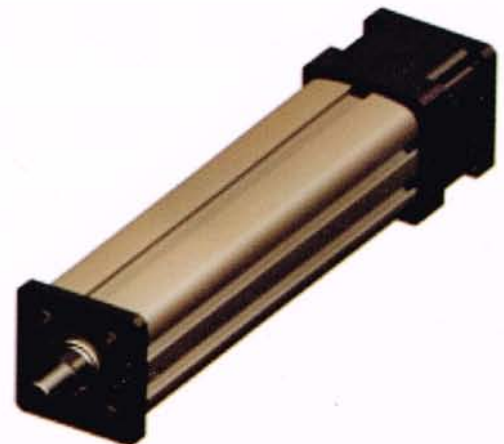
Operation : A programmed command signal is applicable to a servo actuator which controls the die gap (Parison) . The die gap feed back signal is compared with the command signal from the programmer. In this way accurate parison thickness is achieved.

Parison Programming Benefits:

- ◆ Parison programming provides improved container quality, higher production rate, increased profits.
- ◆ Parison programming provides constant wall thickness through the container, insuring improved mechanical endurance at minimum weight .
- ◆ Due to reduced weight, less cooling time, cycle time is less resulting in decrease in material cost to ensure higher profits.



SCEMA Series Linear Actuator



SCEMI Series Linear Actuator

SERVOLAB

India's Best Servo Repair Lab.

We have a huge inventory of Servovalves, DDV's, Tube filters, Cartridge filters, Disc filters, Last chance Filters, Torque motors, Seal kits, O-ring sets, Connectors, Coils, Electronic cards. We repair/Service proportional, servo-proportional & servo valves



All brands, All types, All configurations.

Abex, Atchely, Cincinnati, Coburn, Dowty, Dvyal, EMG, Heroin, Hydromatic, Kawasaki, LHC, Moog, MTS, Oilgear, Olsen, Parker, Pegauses, Plasser, Rexroth-Bosch, Schneider, Soplelem, Towler, TSS, Ultra, Vickers.

Procedure and testing.

- Evaluation** : Visual inspection is coupled with installing the valve on an evaluation test stand for initial comparison to manufacturers specification.
- Disassembly** : The valve is totally disassembled in to individual parts. Every part is chemically cleaned with solvents.
- Inspection** : Every part including On-Board electronics is inspected and checked for original tolerance. Those that fail are replaced with original manufacture components.
- Testing** : After assembly, the valve is tested for 100% of the performance specification set down by the manufacturer. A test report and computer plot can be included along with repair, along with any replaced parts.

Contact

Deepak V Dhadoti
Mobile : 9448481734

Dinesh V Dhadute
Mobile: 9845109022

S Shrikrishna

Servocontrols and Hydraulics (I) Pvt. Ltd.
Survey No 683, Industrial Estate,
Udyambagh; Belgaum – 590008
Karnataka India
Phone : 91-831-2407501/2/3/2481734/5201132
Fax : 91-831-2484496
E-mail: plastics@servocontrolsindia.com
Website : www.servocontrolsindia.com